

Budget and Finances

ACM SIGSIM

January 2022

Kara A. Olson

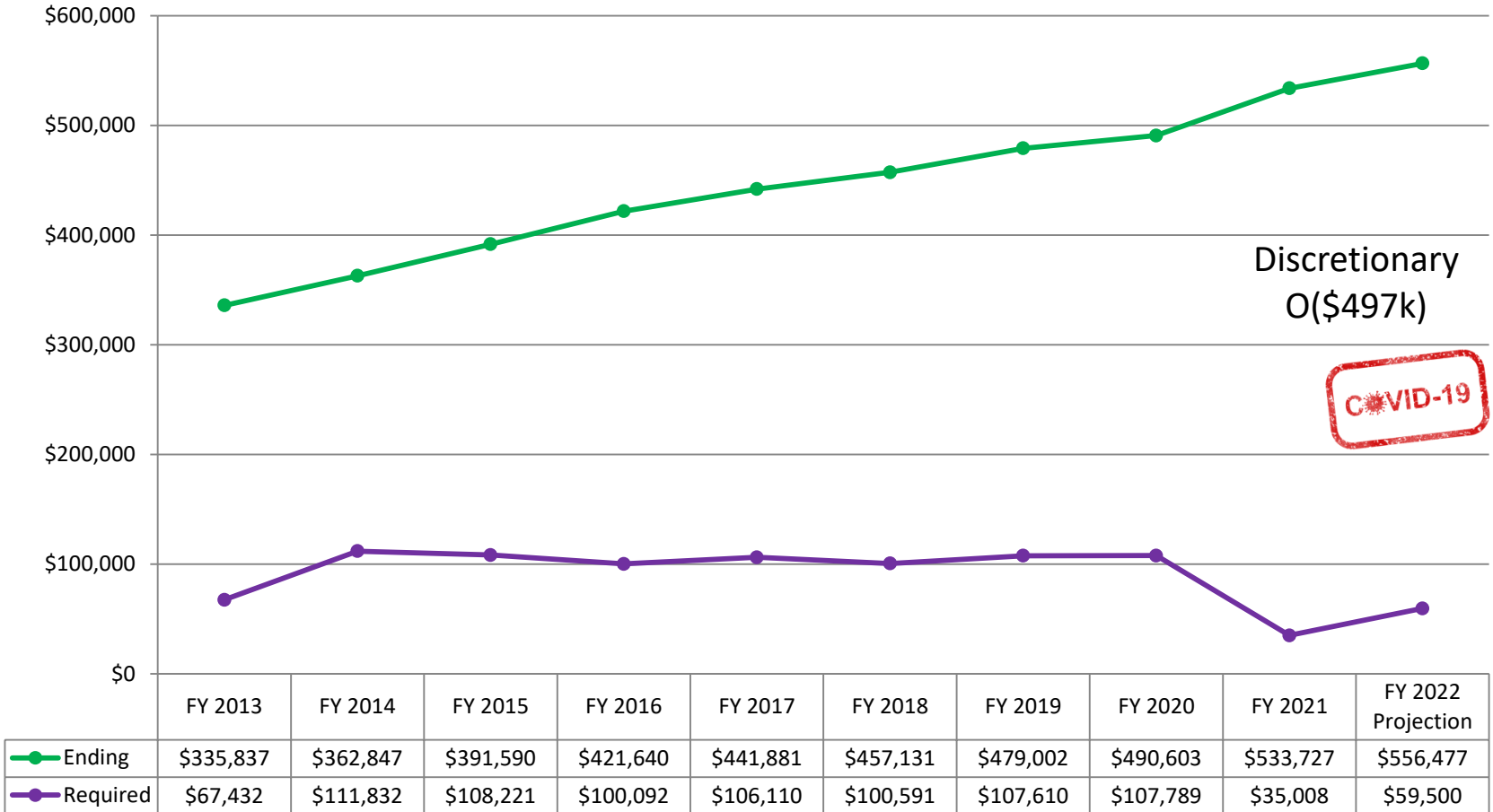
SIGSIM Treasurer/Secretary

James Schembari & Regina Romanov

Office of Financial Services



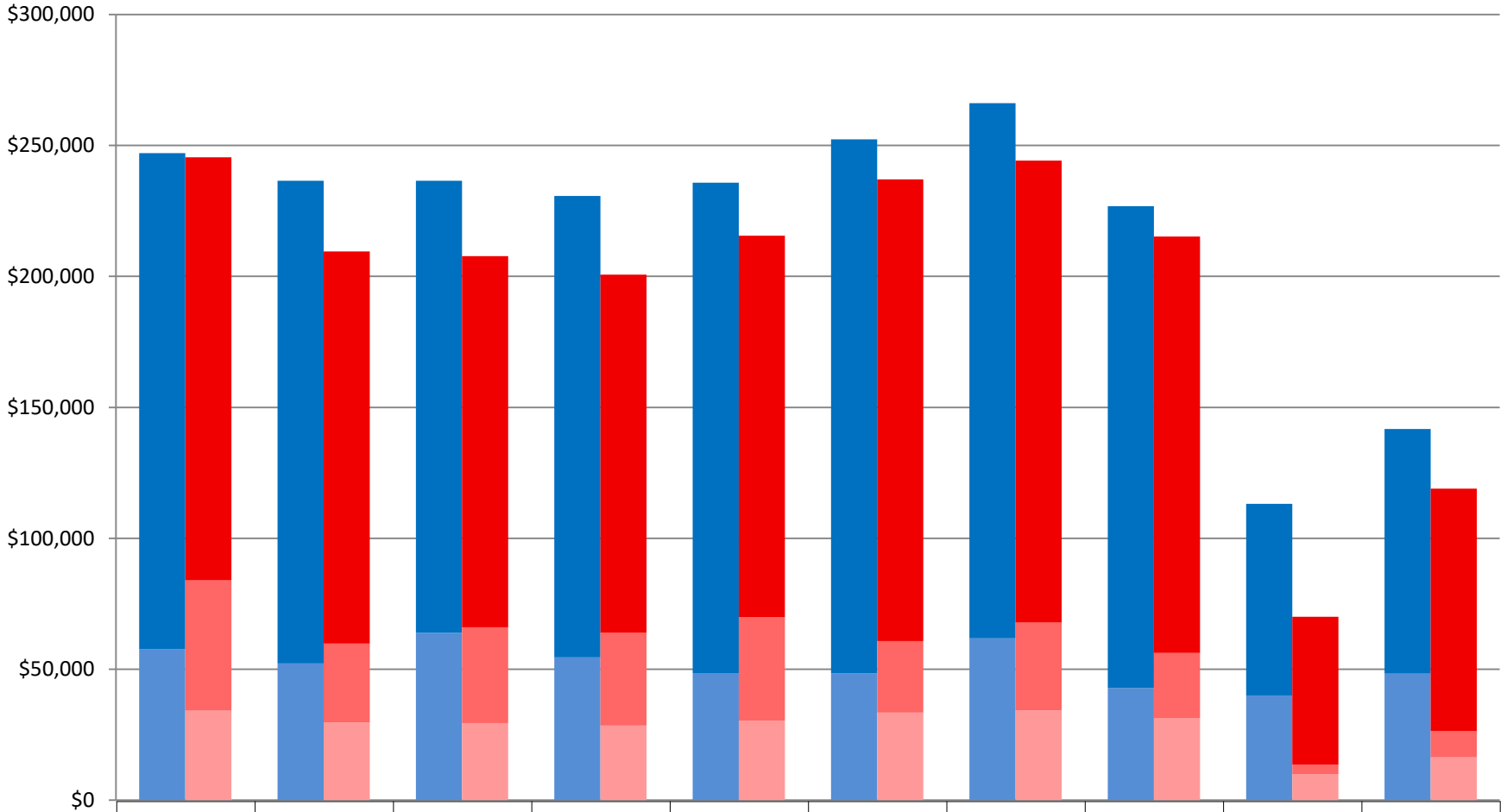
Fund Balance



Required to maintain reserves of 50% of fiscal year expenses

Fiscal year 2022: organization activities July 2021- June 2022 +
conference activities March 2021 - February 2022

Total Financial Operations

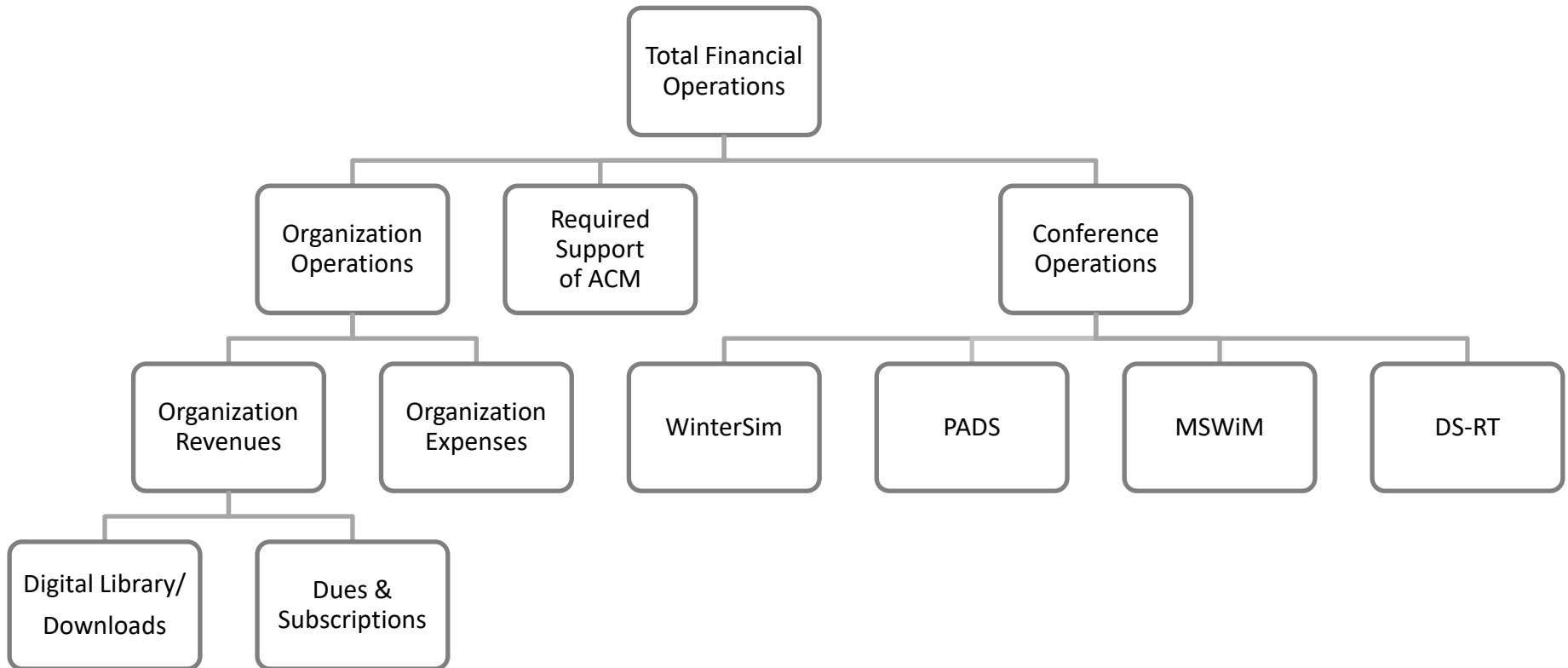


	FY 2013	FY 2014	FY 2015	FY 2016	FY 2017	FY 2018	FY 2019	FY 2020	FY 2021	FY 2022 Projection
Revenues	\$247,055	\$236,495	\$236,516	\$230,691	\$235,816	\$252,327	\$266,115	\$226,761	\$113,141	\$141,750
Expenses	\$245,494	\$209,484	\$207,773	\$200,640	\$215,575	\$237,078	\$244,243	\$215,161	\$70,016	\$119,000

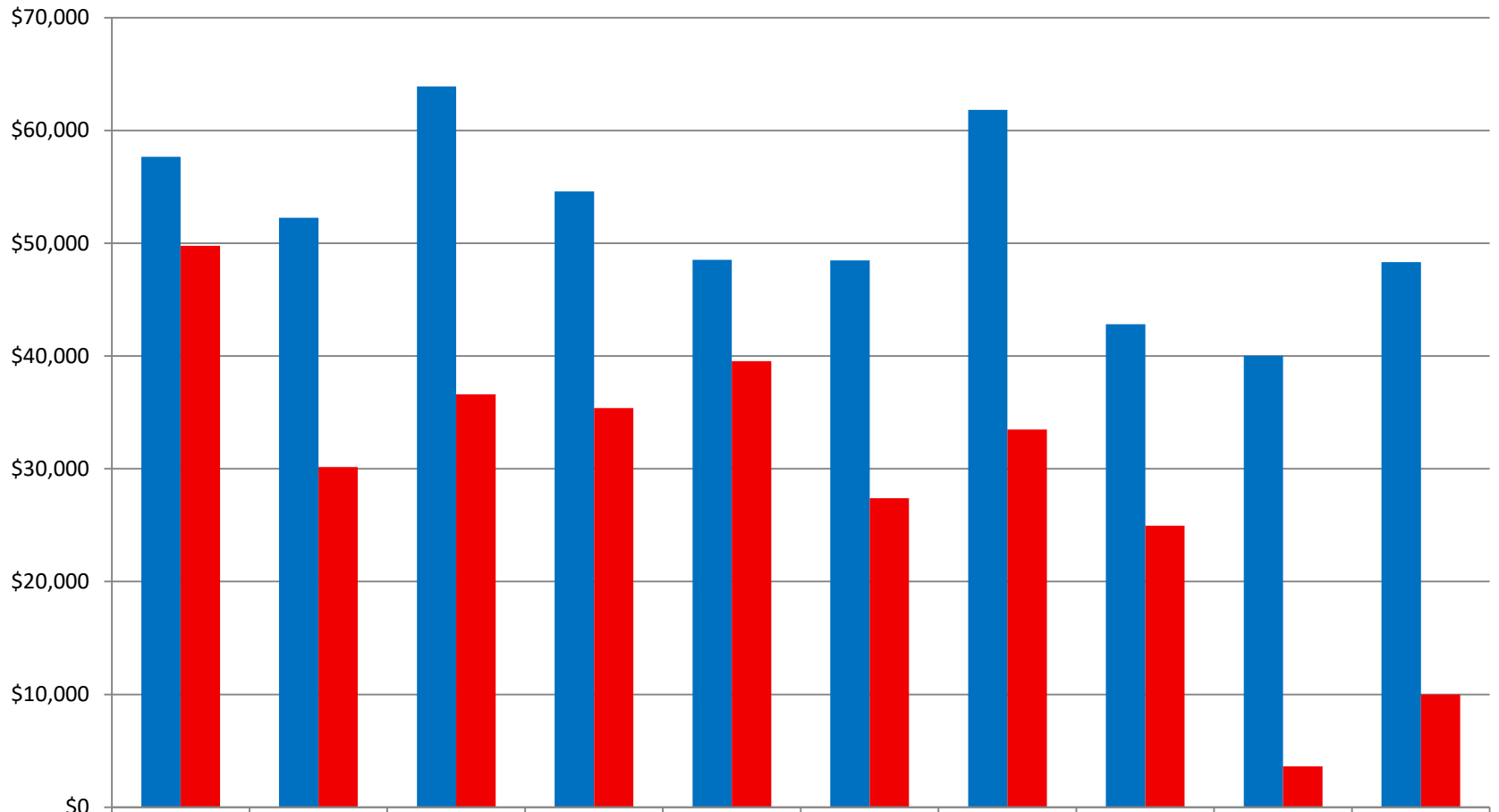
■ Conference Revenues
■ Organization Revenues (including Digital Library)

■ Direct Conference Expenses
■ Direct Organization Expenses
■ Required Support of ACM

Details

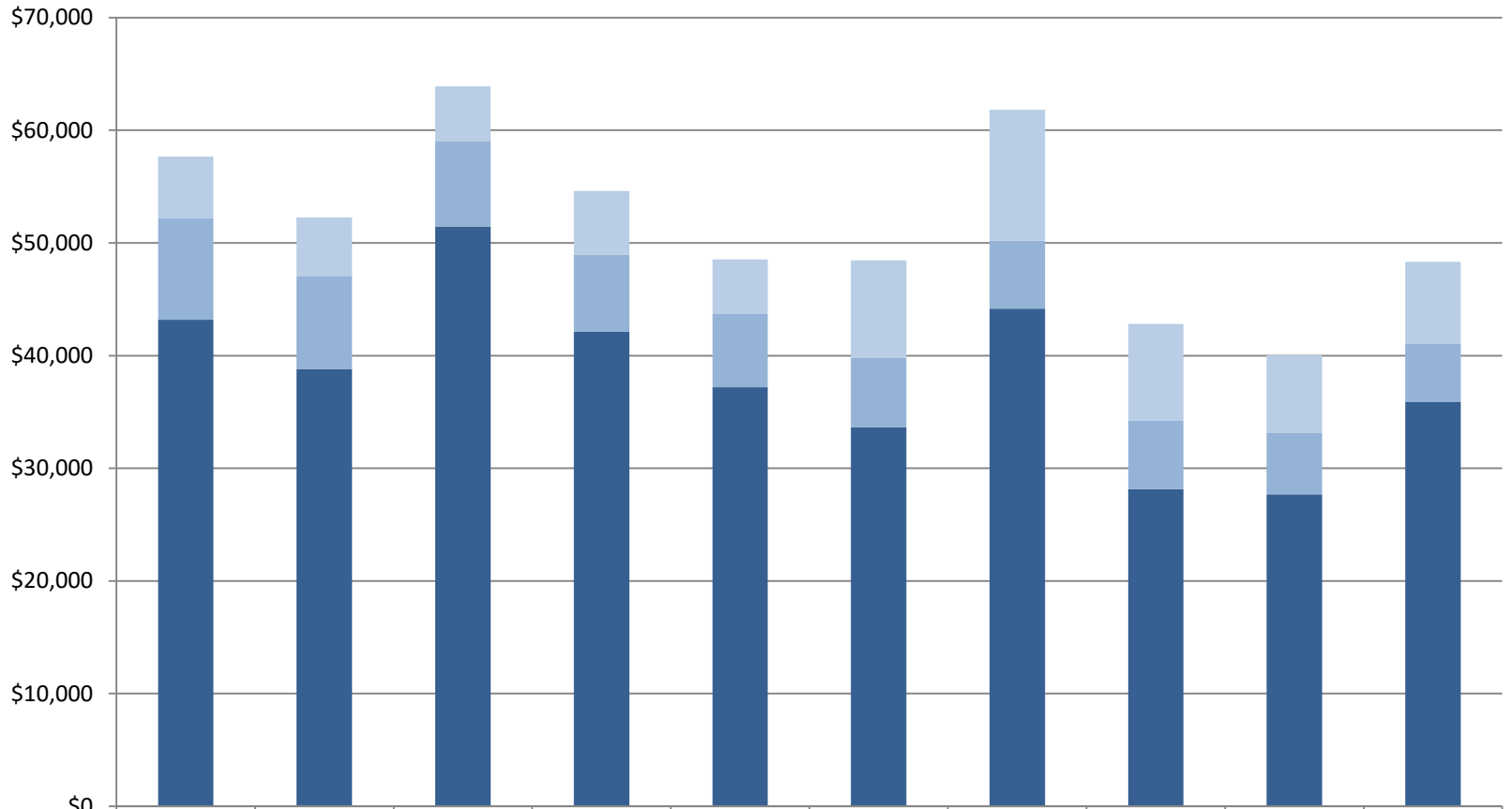


Organization Operations



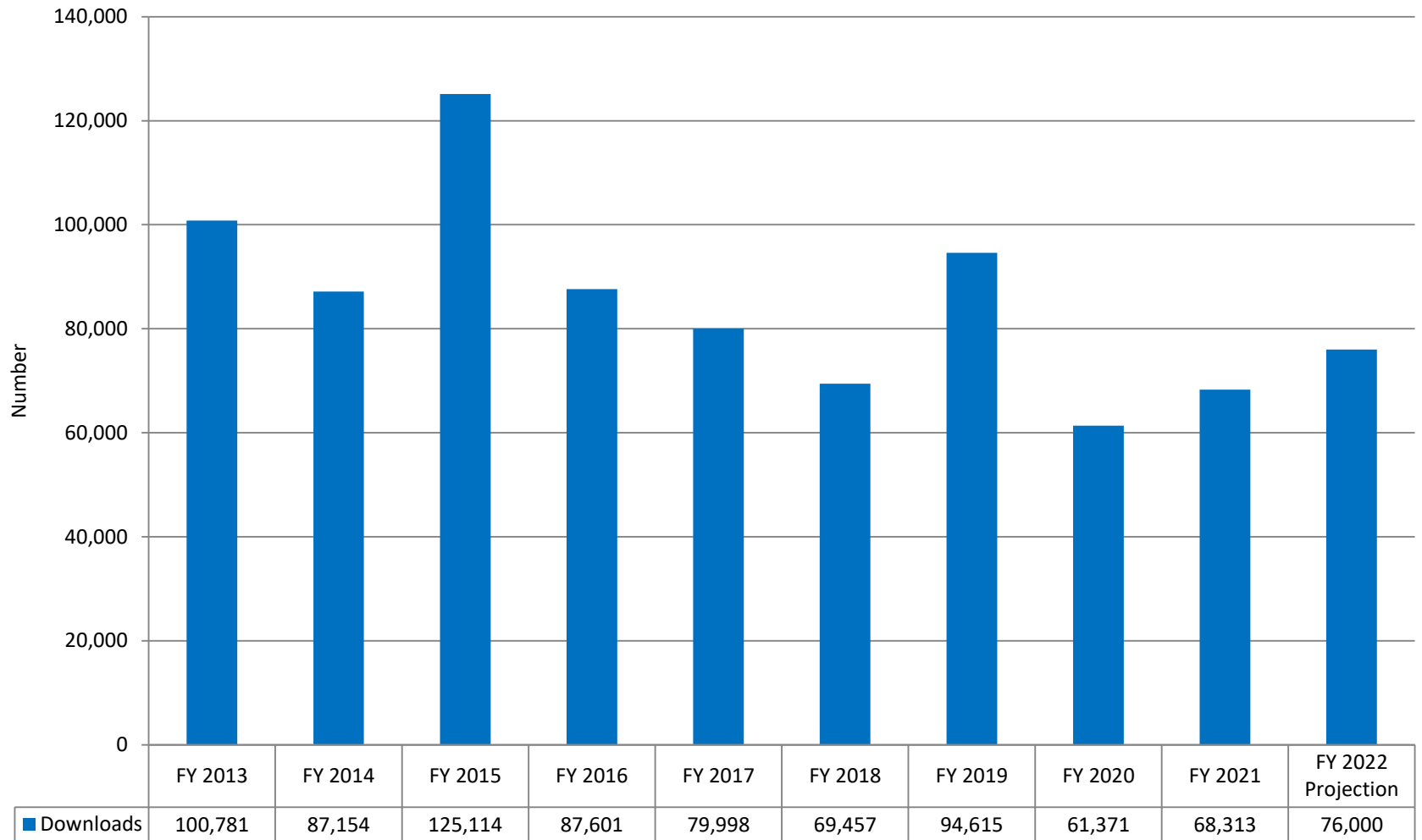
	FY 2013	FY 2014	FY 2015	FY 2016	FY 2017	FY 2018	FY 2019	FY 2020	FY 2021	FY 2022 Projection
■ Revenues	\$57,671	\$52,257	\$63,904	\$54,600	\$48,526	\$48,465	\$61,822	\$42,815	\$40,033	\$48,314
■ Direct Expenses	\$49,767	\$30,154	\$36,611	\$35,387	\$39,559	\$27,394	\$33,487	\$24,957	\$3,611	\$10,000

Organization Revenues



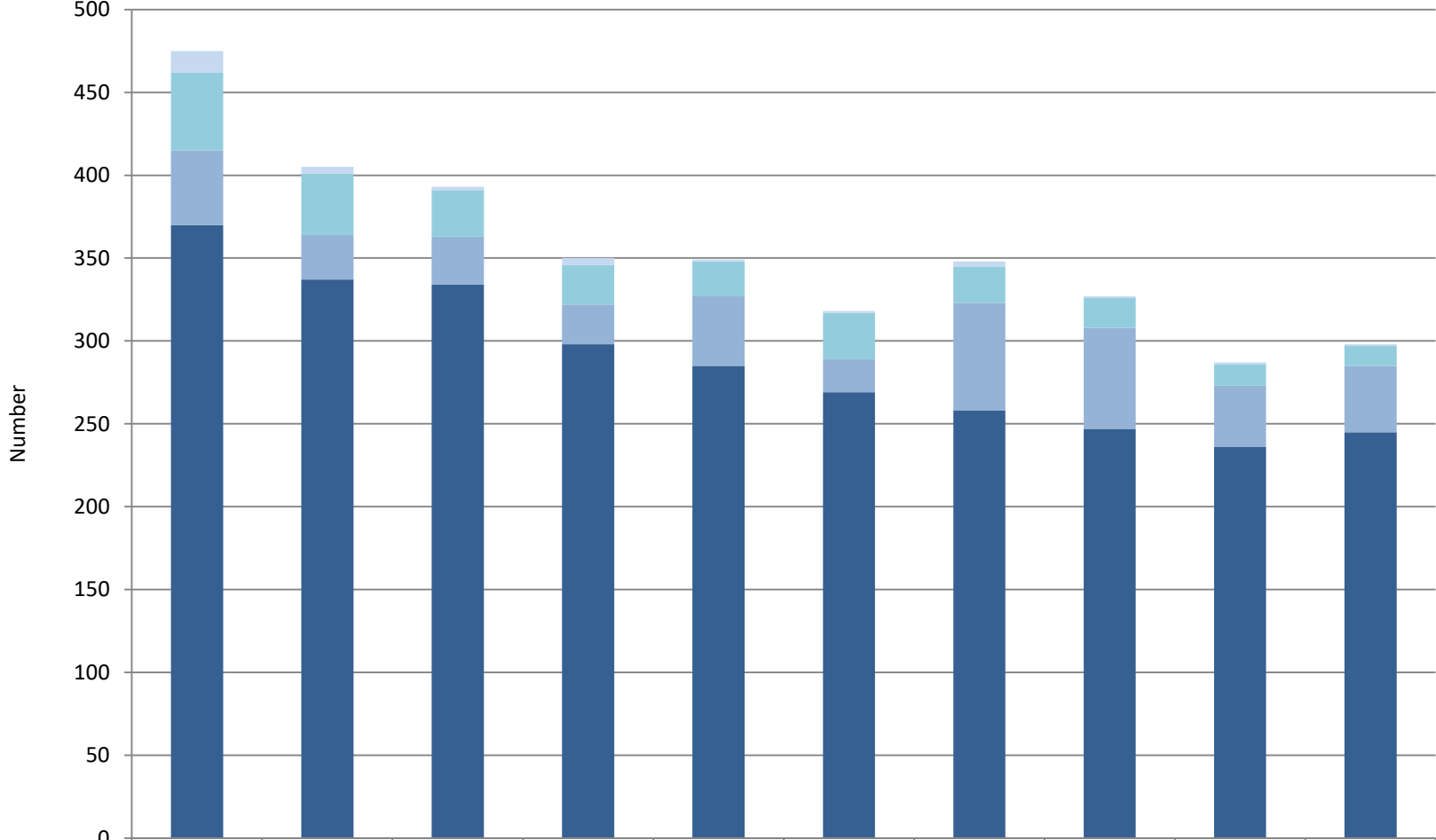
	FY 2013	FY 2014	FY 2015	FY 2016	FY 2017	FY 2018	FY 2019	FY 2020	FY 2021	FY 2022 Projection
Interest and All Other	\$5,454	\$5,245	\$4,918	\$5,634	\$4,836	\$8,632	\$11,610	\$8,605	\$6,848	\$7,240
Dues & Subscriptions	\$9,047	\$8,194	\$7,528	\$6,861	\$6,510	\$6,188	\$6,058	\$6,059	\$5,485	\$5,168
Digital Library	\$43,170	\$38,818	\$51,458	\$42,105	\$37,180	\$33,645	\$44,155	\$28,151	\$27,699	\$35,906

Digital Library/Downloads



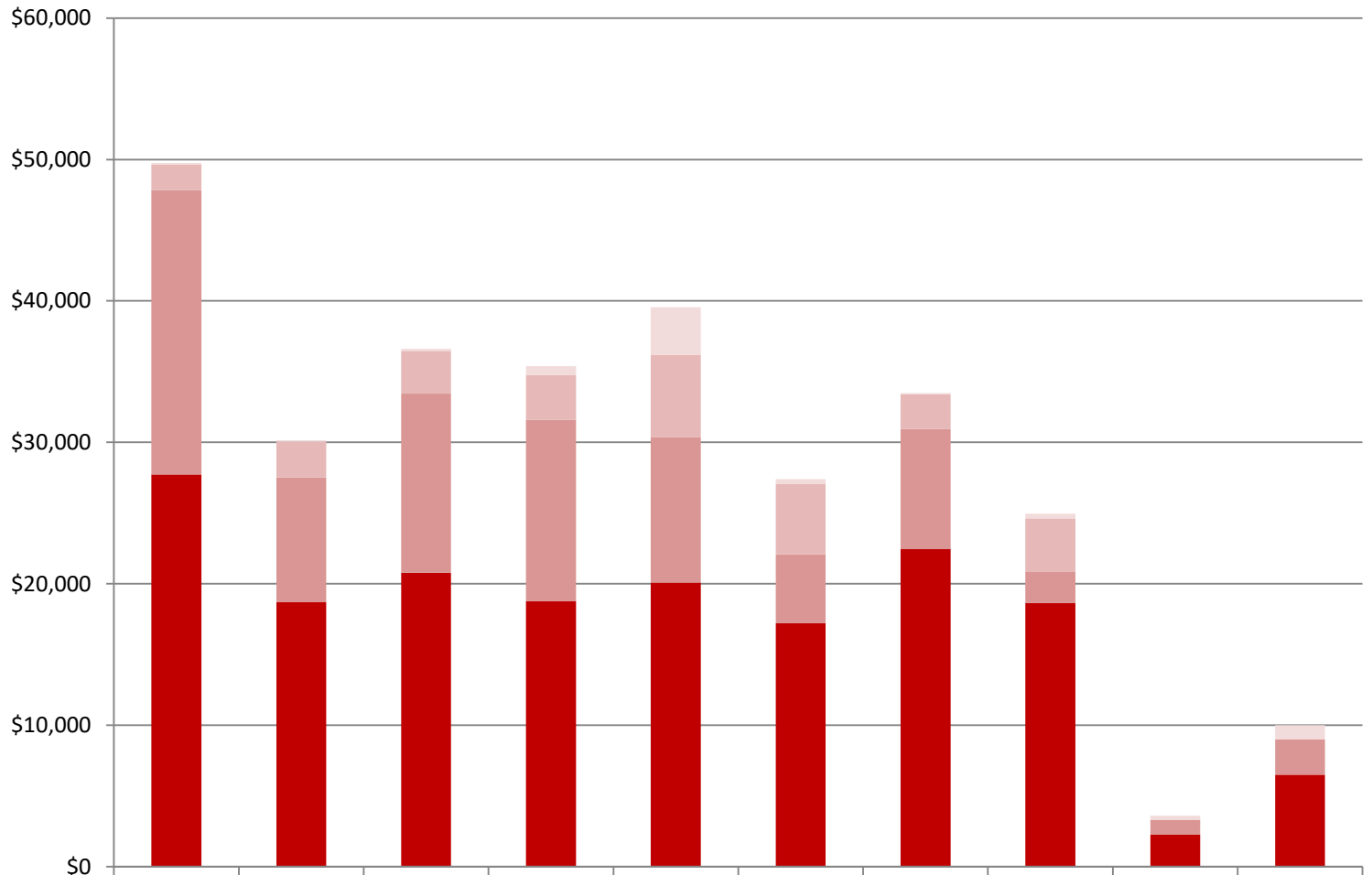
Each SIG receives income from the Digital Library based on downloads (minimum \$10K)

Dues & Subscriptions



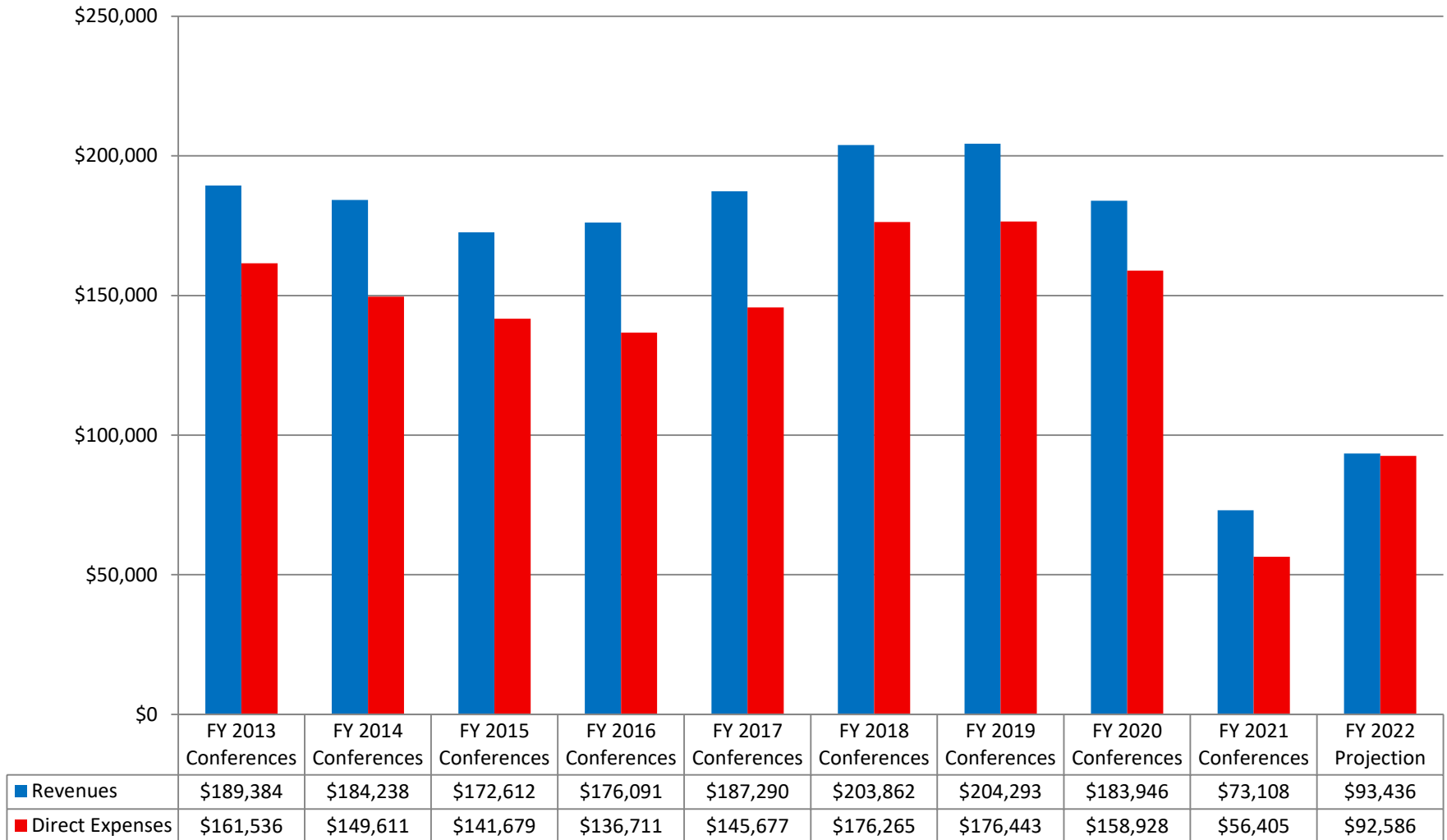
	FY 2013	FY 2014	FY 2015	FY 2016	FY 2017	FY 2018	FY 2019	FY 2020	FY 2021	FY 2022 Projection
Subscribers	13	4	2	4	1	1	3	1	1	1
Student Members	47	37	28	24	21	28	22	18	13	12
SIG-Only Members	45	27	29	24	42	20	65	61	37	40
Professional Members	370	337	334	298	285	269	258	247	236	245

Direct Organization Expenses



	FY 2013	FY 2014	FY 2015	FY 2016	FY 2017	FY 2018	FY 2019	FY 2020	FY 2021	FY 2022 Projection
All Other	\$127	\$108	\$149	\$624	\$3,388	\$353	\$83	\$327	\$291	\$1,000
Travel and Meetings	\$1,804	\$2,523	\$3,017	\$3,162	\$5,796	\$4,962	\$2,473	\$3,794	\$0	\$0
Production and Distribution	\$20,101	\$8,794	\$12,668	\$12,818	\$10,282	\$4,863	\$8,480	\$2,188	\$1,039	\$2,500
Grants, Awards, Special Projects	\$27,735	\$18,729	\$20,777	\$18,783	\$20,093	\$17,215	\$22,452	\$18,648	\$2,281	\$6,500

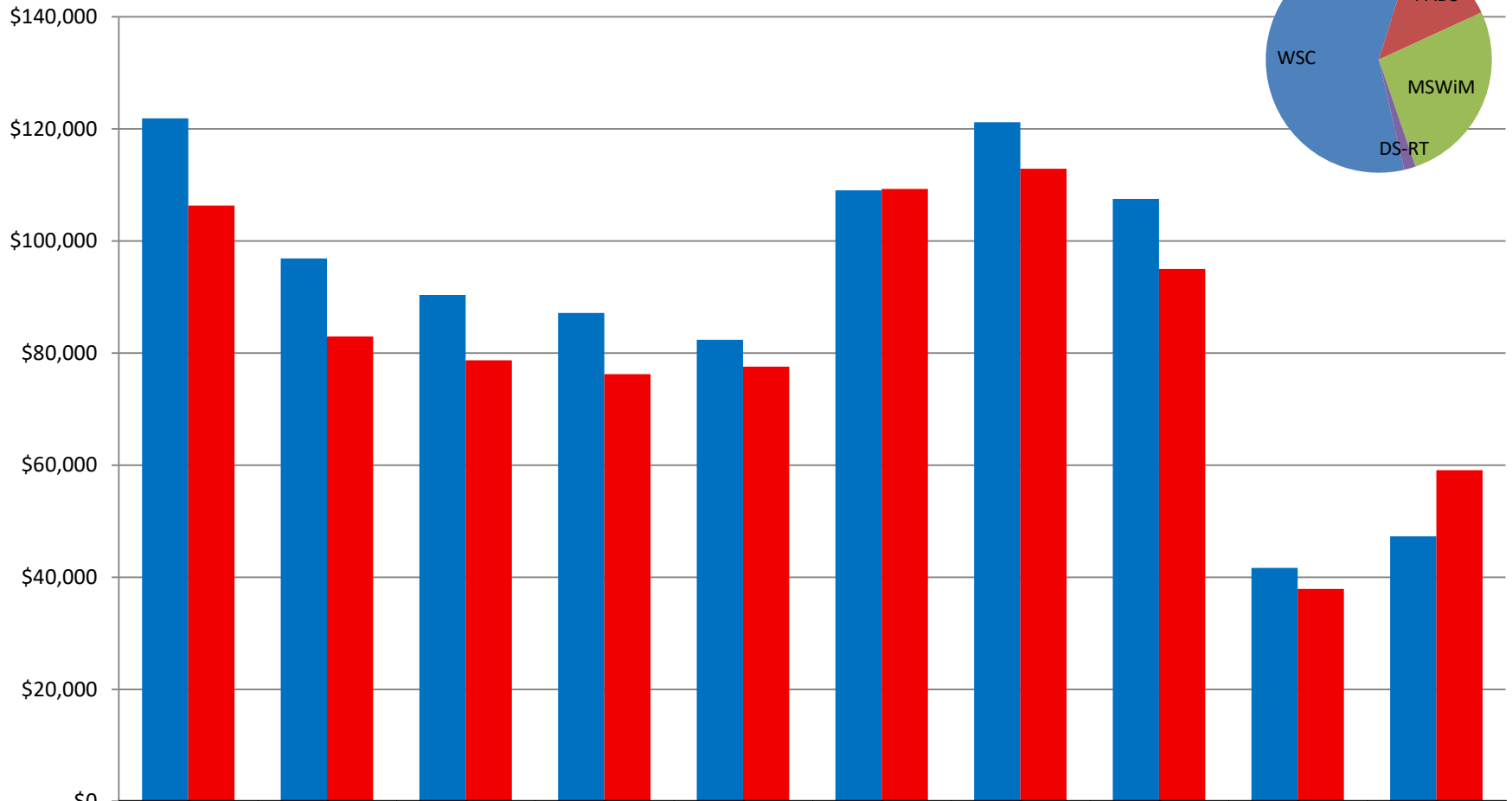
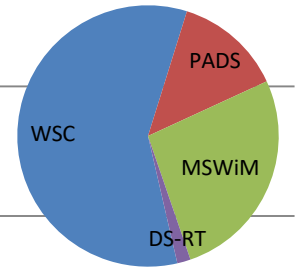
Conference Operations



Reminder: conference FY 2022: conference activities March 2021 - February 2022

Winter Simulation Conference (December)

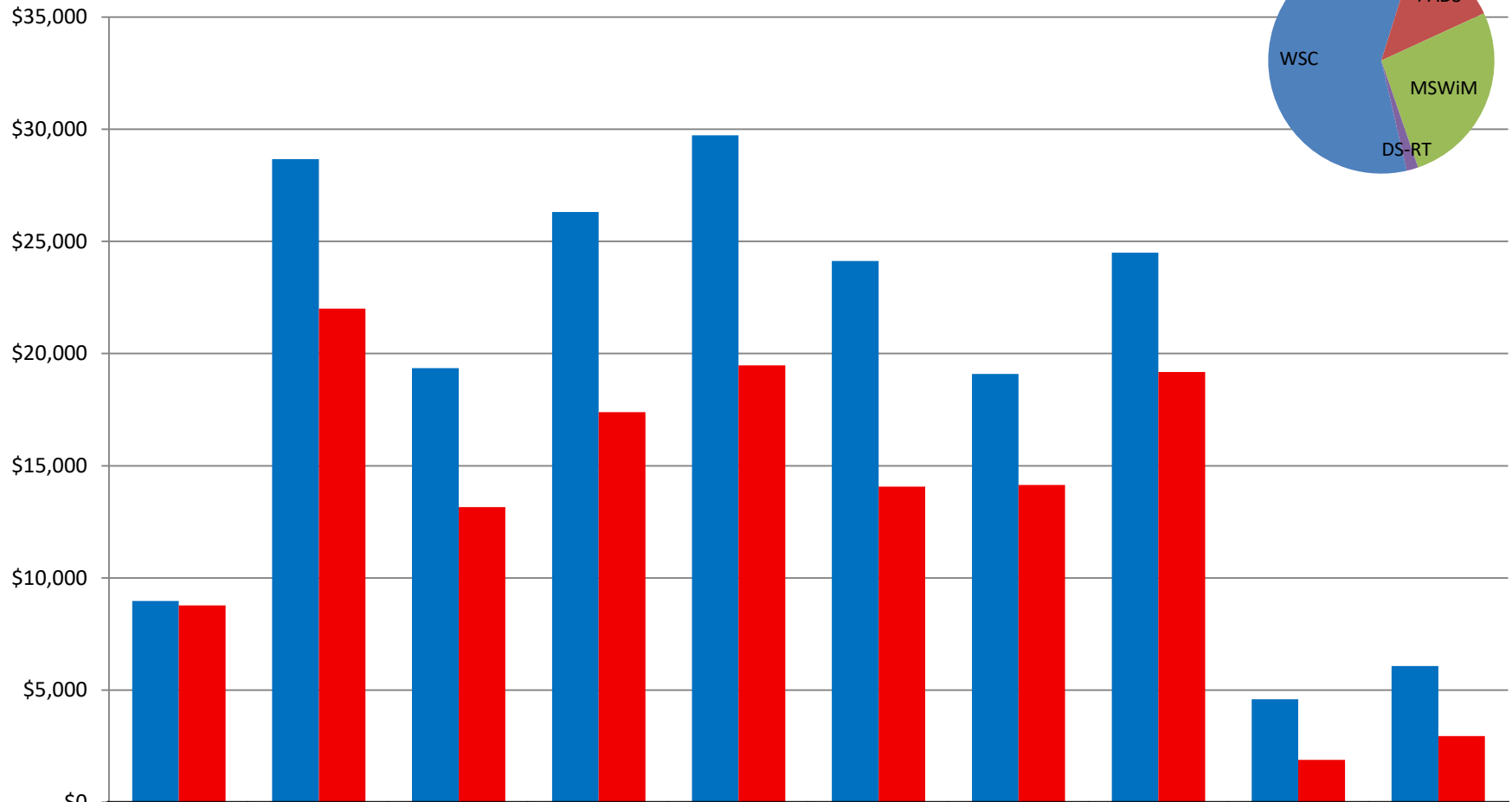
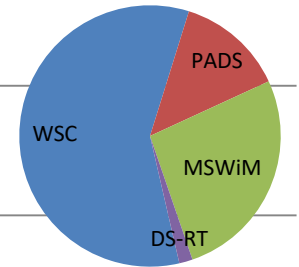
25% sponsor



	2012 Berlin, Germany	2013 Washington, DC	2014 Savannah, GA	2015 Huntington Beach, CA	2016 Arlington, VA	2017 Las Vegas, NV	2018 Gothenburg, Sweden	2019 National Harbor, MD	2020 Orlando, FL [Virtual]	2021 Phoenix, AZ [Hybrid] Projection
■ Revenues	\$121,845	\$96,864	\$90,363	\$87,148	\$82,346	\$109,036	\$121,155	\$107,479	\$41,681	\$47,280
■ Direct Expenses	\$106,311	\$82,925	\$78,691	\$76,232	\$77,580	\$109,261	\$112,895	\$94,975	\$37,893	\$59,081

PADS – Principles of Advanced Discrete Simulation (June)

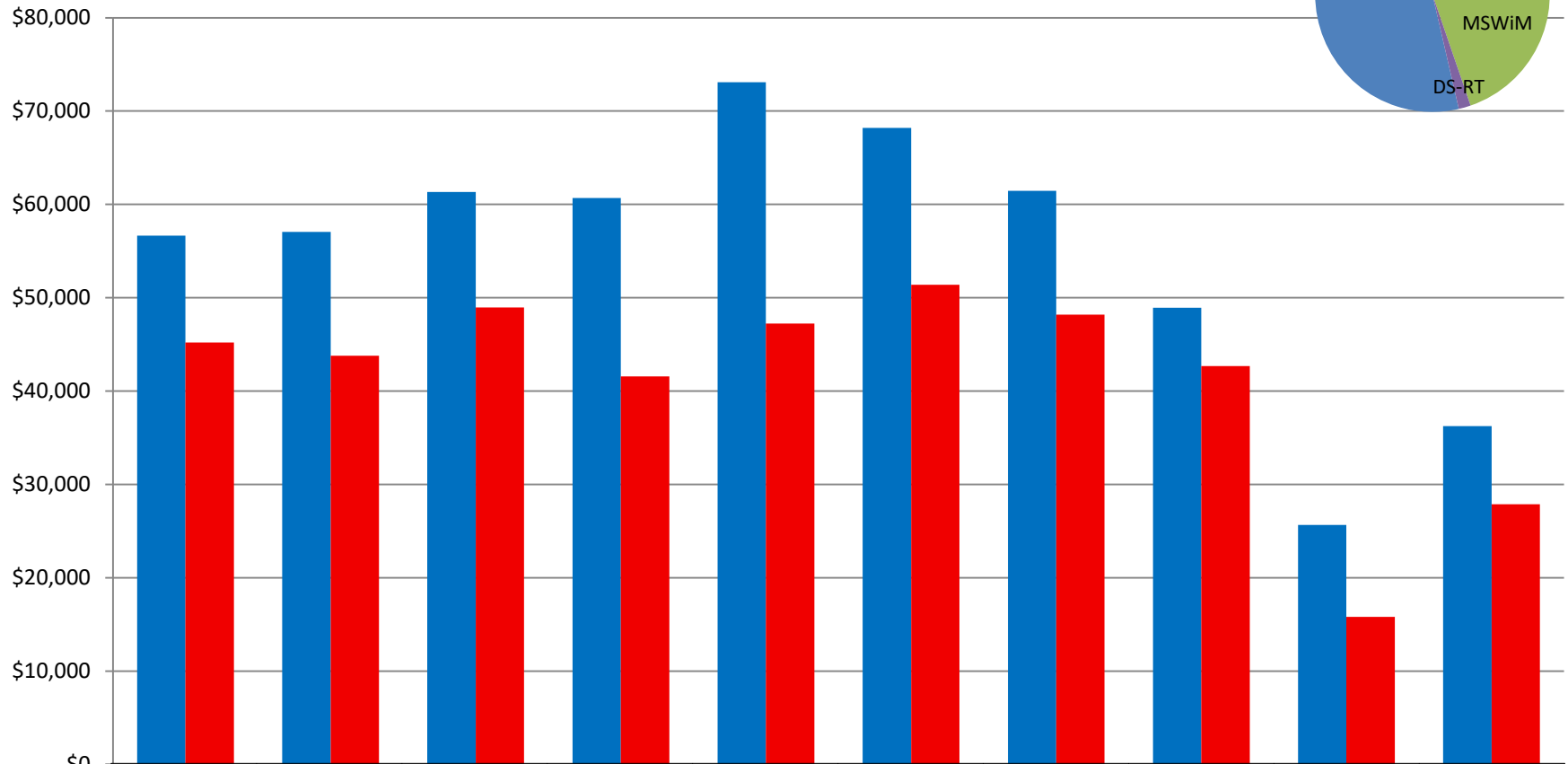
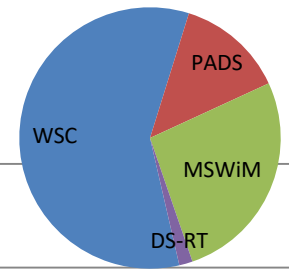
100% sponsor (33% sponsor through 2012)



	2012 Zhangjiajie, China	2013 Montreal, QC, Canada	2014 Denver, CO	2015 London, England	2016 Banff, AB, Canada	2017 Singapore	2018 Rome, Italy	2019 Chicago, IL	2020 Miami, FL [Virtual]	2021 Suffolk, VA [Virtual]
■ Revenues	\$8,974	\$28,662	\$19,350	\$26,305	\$29,720	\$24,130	\$19,097	\$24,490	\$4,600	\$6,070
■ Direct Expenses	\$8,783	\$22,000	\$13,152	\$17,384	\$19,475	\$14,067	\$14,141	\$19,182	\$1,890	\$2,952

MSWiM – Modeling, Analysis and Simulation of Wireless and Mobile Systems (November)

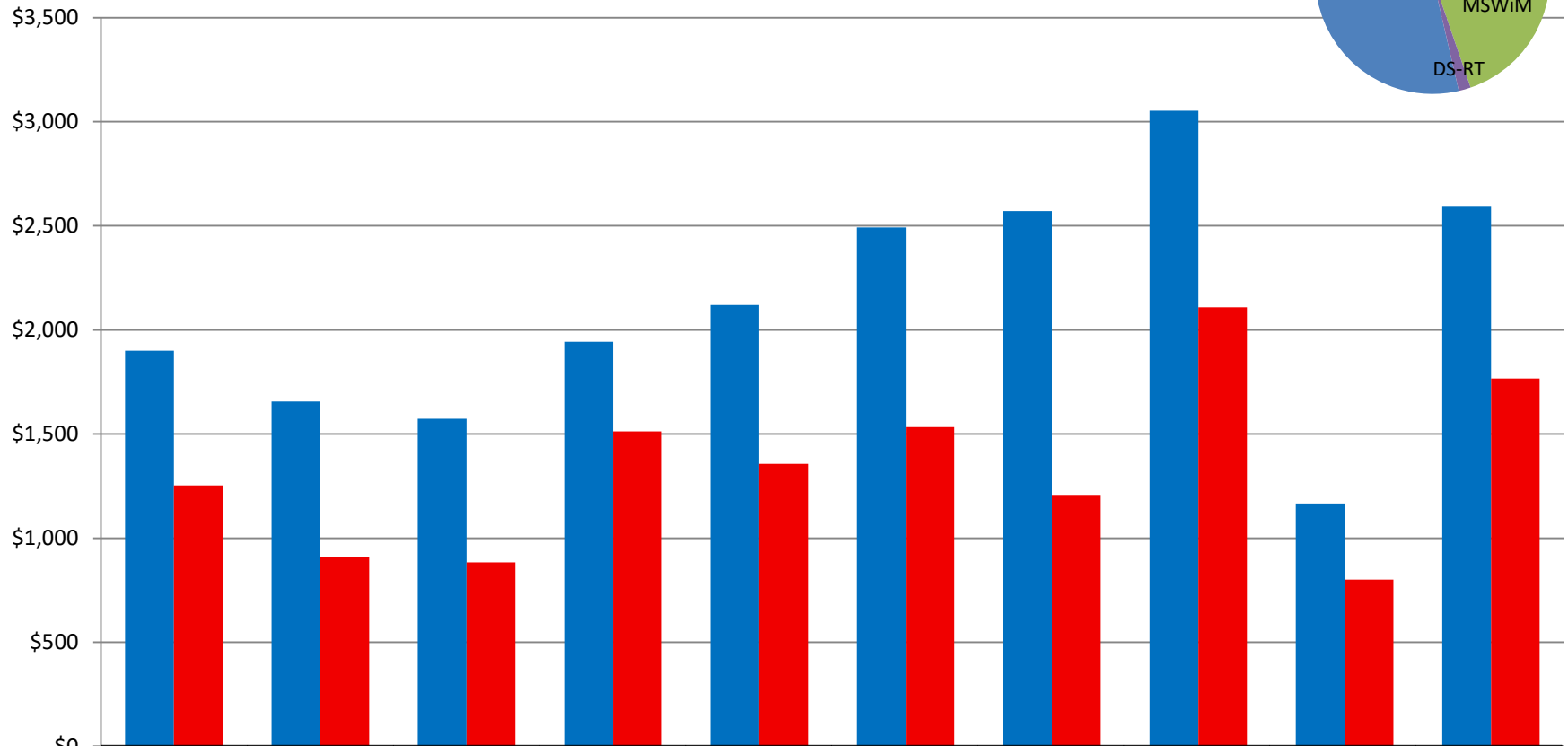
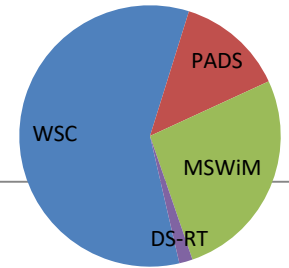
100% sponsor



	2012 Paphos, Cyprus	2013 Barcelona, Spain	2014 Montreal, QC, Canada	2015 Cancun, Mexico	2016 Malta	2017 Miami Beach, FL	2018 Montreal, QC, Canada	2019 Miami Beach, FL	2020 Alicante, Spain [Virtual]	2021 Alicante, Spain [Virtual] Projection
■ Revenues	\$56,665	\$57,055	\$61,325	\$60,695	\$73,104	\$68,205	\$61,470	\$48,925	\$25,660	\$36,260
■ Direct Expenses	\$45,188	\$43,778	\$48,952	\$41,582	\$47,244	\$51,403	\$48,199	\$42,663	\$15,820	\$27,861

DS-RT – Distributed Simulation and Real Time Applications (Sept.)

20% sponsor in 2021 (10% sponsor through 2020)



	2012 Dublin, Ireland	2013 Delft, Netherlands	2014 Toulouse, France	2015 Chengdu, China	2016 London, England	2017 Rome, Italy	2018 Madrid, Spain	2019 Cosenza, Italy	2020 Prague, Czech Republic [Virtual]	2021 Valencia, Spain [Virtual]
■ Revenues	\$1,900	\$1,656	\$1,574	\$1,943	\$2,120	\$2,492	\$2,571	\$3,052	\$1,167	\$2,592
■ Direct Expenses	\$1,254	\$908	\$884	\$1,513	\$1,357	\$1,534	\$1,208	\$2,109	\$801	\$1,767

